

AB-68 Ex

Audiobeam® 2NM Fog Signal



TIDELAND ENGINEERED

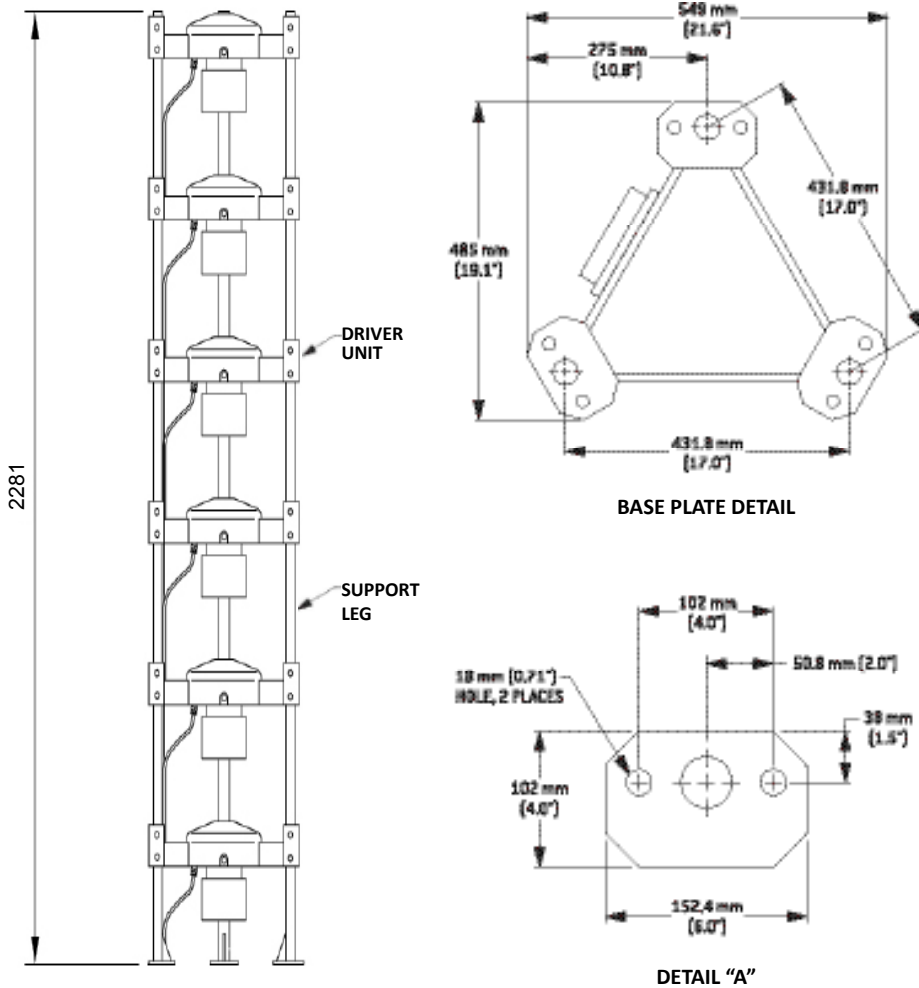
The AB-68-Ex Audiobeam is a multi-emitter array that broadcasts a 360° beam of sound in the horizontal plane to a preselected code. Designed for use on offshore installations in hazardous gas environments.

FEATURES

- **Emitter Units-** The emitters are heavy-duty electromagnetic types with phenolic-coated linen diaphragms in watertight manganese bronze enclosures. They are highly resistant to corrosion and operate at only 25% of rated capacity ensuring the longest service life.
- **Electronic Control Unit-** Tideland's ECU 800 generates the selected code. In the Main/Secondary arrangement 2 x ECU are used, one duty and one standby. A current monitor will automatically change over from the duty to the standby unit and report an alarm to a central monitor panel. Any 2 driver units are sufficient to meet a ½ mile secondary range requirement.
- **Structure-** The supporting structure comprises 3 x 316 stainless steel legs able to withstand severe storms and harsh marine environments. The fog signal is completely assembled, wired and tested and ready for field connection. When a subsidiary light is required its bracket can be mounted to one leg of the structure.
- **Power-** The advantage of the integral coder means the AB-68Ex can operate in autonomous stand alone mode from a central or dedication local battery. Tideland can supply fully certified Zone 1 power supply systems.



AB-68 Audio beam Fog Signal



TIDELAND SIGNAL CORPORATION
CORPORATE HEADQUARTERS (Houston, TX)
 TEL + 1 713-681-6101
 FAX + 1 713-681-6233
 EMAIL hq@tidelandsignal.com

TIDELAND SIGNAL CORPORATION (Lafayette, LA)
 TEL + 1 337-269-9113
 FAX + 1 337-269-9052
 EMAIL lafayettesales@tidelandsignal.com

TIDELAND SIGNAL CANADA LTD
(Vancouver and Ottawa)
 TEL + 1 604-247-0988
 FAX + 1 604-247-0987
 EMAIL canada-sales@tidelandsignal.com

TIDELAND SIGNAL PTE LTD (Singapore)
 TEL + 65 6333-0078
 FAX + 65 6333-0079
 EMAIL sales@tidelandsignal.com.sg

TIDELAND SIGNAL LTD (Burgess Hill, UK)
 TEL + 44 (0) 1444-872240
 FAX + 44 (0) 1444-872241
 EMAIL sales@tidelandsignal.ltd.uk

TIDELAND SIGNAL LTD (Dubai, UAE)
 TEL + 971 (0) 4-885-5842
 FAX + 971 (0) 4-885-7352
 EMAIL sales@tidelandsignal.ltd.uk

WEBSITE www.tidelandsignal.com



ISO 9001:2008
 Certificate
 Number: 30061

ISO 9001:2008

Tideland Signal Corporation maintains ISO 9001:2008 accreditation. It is company policy to provide products and services that meet the highest standards of quality in the industry.

SPECIFICATIONS

Range	2NM usual range as defined and recommended IALA USCG approved per CFR 67.10 as a 2NM fog signal
Input	
Voltage	12 or 24VDC
Power	180W when sounding
Output	
Frequency	800Hz
SPL	greater than 133.4dB @ 1 metre
Coding	Usually Morse U or one of any 256 pre-programmed
Environmental	Marine atmospheres; 100% Relative Humidity; Emitters - IP64, Electronics – IP66
Hazardous Area Certification	Zone 1 II 2 G Ex d IIB T3 Tamb -40°C to + 60°C Gb
Weight	220kg (485lbs)

Membership Organizations



Audiobeam® is a registered trademark of Tideland Signal Corporation.

© Tideland Signal Corporation 2011
 G8R04